

Smart Label – Setup and User Guide

Contents

1.	Download and Installation Instructions	2
1.1.	Download and Installation	2
1.2.	Prerequisite Phone Settings	2
1.3.	User Registration and Login	2
2.	Application Work Flow	2
2.1.	Setting New Configuration Profile	2
2.2.	Scanning Label.....	3
2.3.	View Details.....	4
2.4.	Scan History	4
3.	Web Dashboard	5
3.1.	Total Tag Scan Report	5
3.2.	Tag Scan History	5
3.3.	Tag Temperature Details.....	6
4.	Label Configuration – Web Dashboard	7



1. Download and Installation Instructions

1.1. Download and Installation

The Smart Label application is available for download from the Google Play Store at: <https://play.google.com/store/apps/details?id=com.syntel.connectone.smartlabel>

The application can also be found by searching for key words “Smart Label” in the Google Play Store search box.

The Smart Label mobile application requires Android 5.0 Lollipop or above.

1.2. Prerequisite Phone Settings

The Smart Label application requires enabling GPS, NFC, and Internet connectivity on the phone.

1.3. User Registration and Login

A new user must first complete the registration process by clicking the “Signup” link.

During the registration process on the mobile app, the user is given the option to enter a group token to associate themselves with a company.

Group tokens represent a group or company. Users with the same token are considered to be part of the same company. All reports on the Smart Label dashboard are aggregated at the company level.

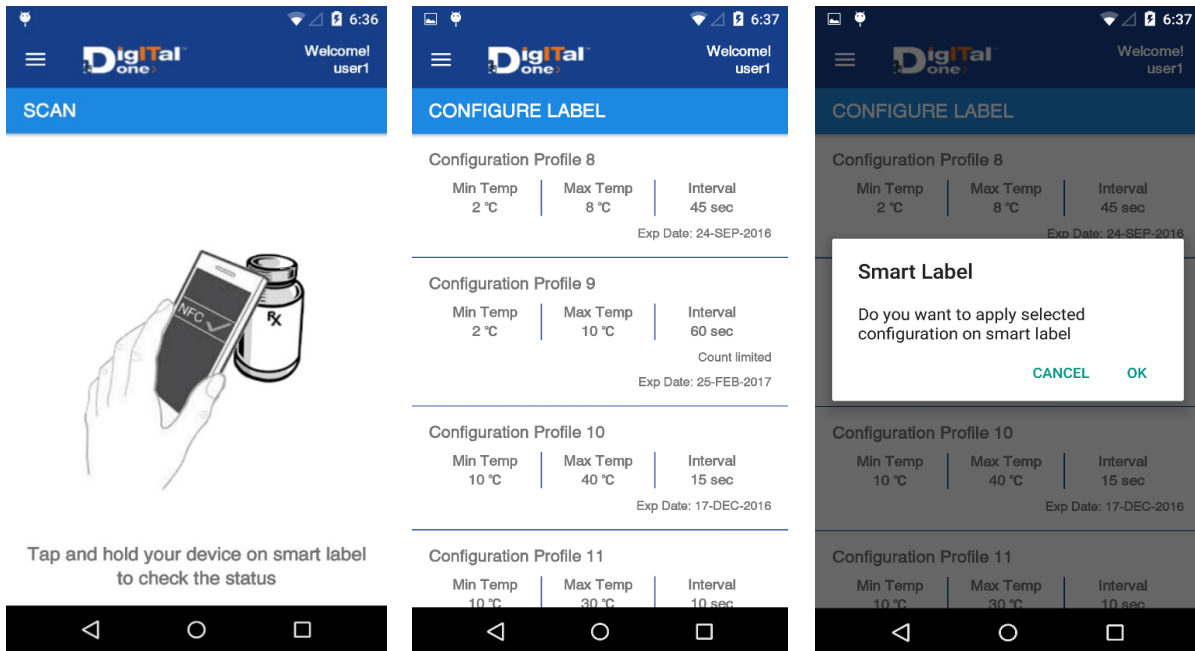
If a group token is not entered, a new token is generated. That new token can be shared with other group members later from the menu option “Share Group Token”. The user can also update their group token to change company associations at any time.

2. Application Work Flow

2.1. Setting New Configuration Profile

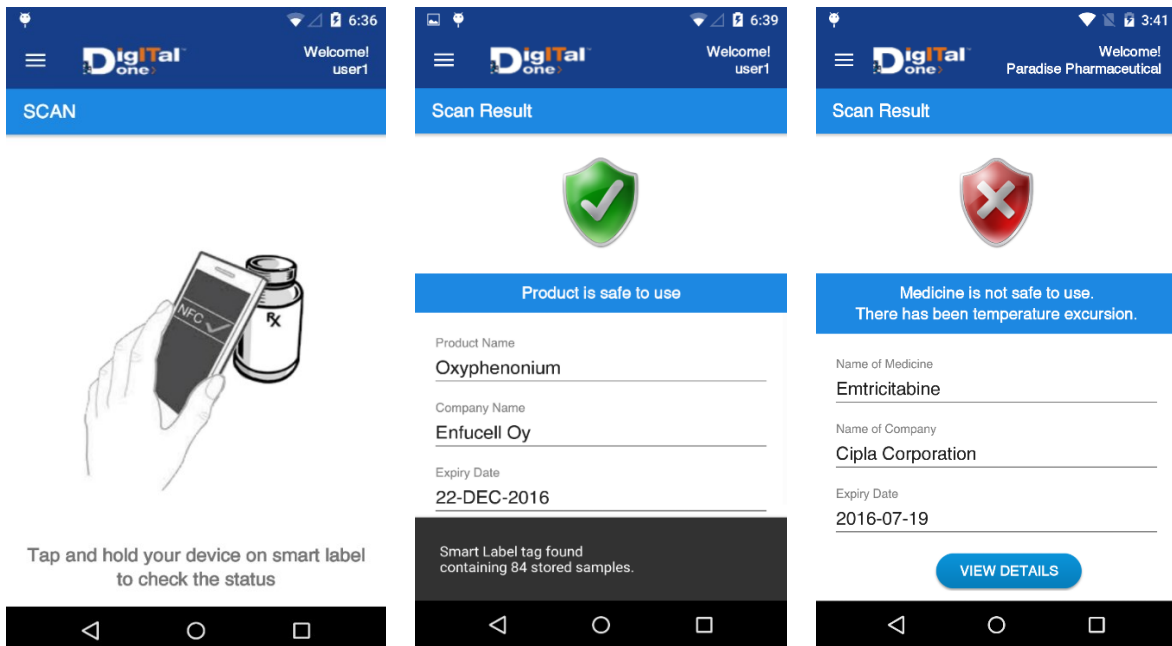
When the application is launched for the first time, the user is shown a “Scan Label” screen. A new label must be configured before it can be used. When the user scans a new (unconfigured) label, they are automatically redirected to a “Configuration Setup” screen.

By default, two configuration profiles will be available to configure the Smart Label. Additional profiles can be added from the Smart Label web interface. The user is required to bring the Smart Label within the NFC field of the phone (approx. 4 - 5 cm) and select the profile to be applied.



2.2. Scanning Label

Bring the Smart Label into contact with the phone's NFC field while the phone shows the "Scan" page. The application will show the following "Safe/Unsafe" results with the tag/product information:

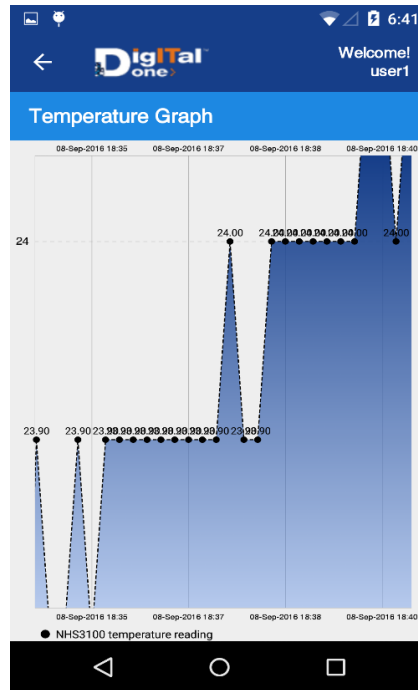
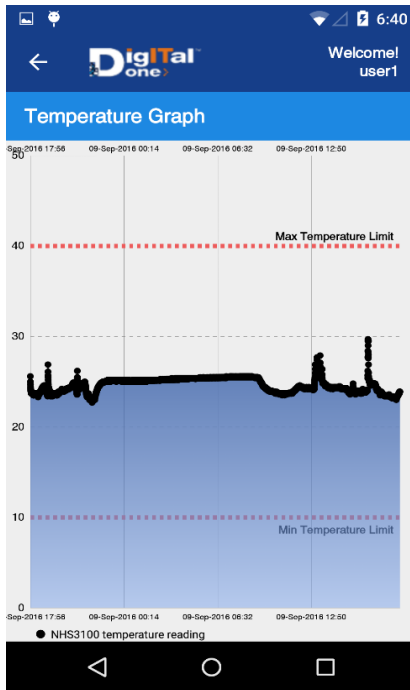


While the "Safe/Unsafe" information is displayed immediately upon scanning, retrieving the detailed temperature records may require the user to hold the Smart Label near the mobile NFC

field for a longer duration. Once all temperature records are read, the “View Details” button will be enabled.

2.3. View Details

The “View Details” page shows all the temperature records stored on the label as shown below.



2.4. Scan History

A log of all the smart label scans can be found under the “Scan History” menu option.

This screenshot shows the 'SCAN HISTORY' interface. The top bar includes a menu icon, the 'Digital one' logo, and a 'Welcome! user1' message. The title is 'SCAN HISTORY'. The table below lists six scans of 'Oxyphenonium' with timestamps and green checkmark status icons.

Item	Timestamp	Status
Oxyphenonium	09-SEP-2016, 18:50:49	✓
Oxyphenonium	09-SEP-2016, 18:50:37	✓
Oxyphenonium	09-SEP-2016, 18:49:42	✓
Oxyphenonium	09-SEP-2016, 18:49:29	✓
Oxyphenonium	09-SEP-2016, 18:49:21	✓
Oxyphenonium	09-SEP-2016, 18:48:53	✓

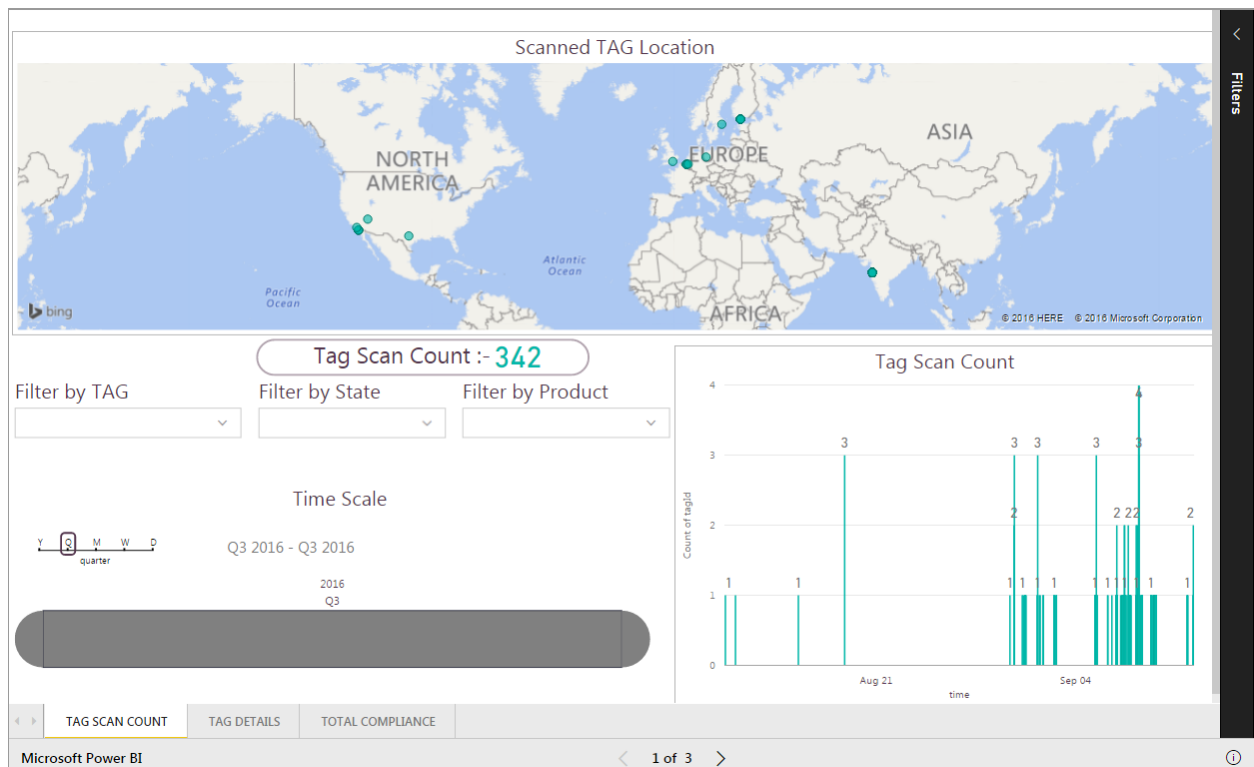
3. Web Dashboard

The web dashboard is accessible at: <http://securelabel.cloudapp.net>

To access the web dashboard, please use the same credentials as used in the Smart Label mobile app. The following three reports are provided.

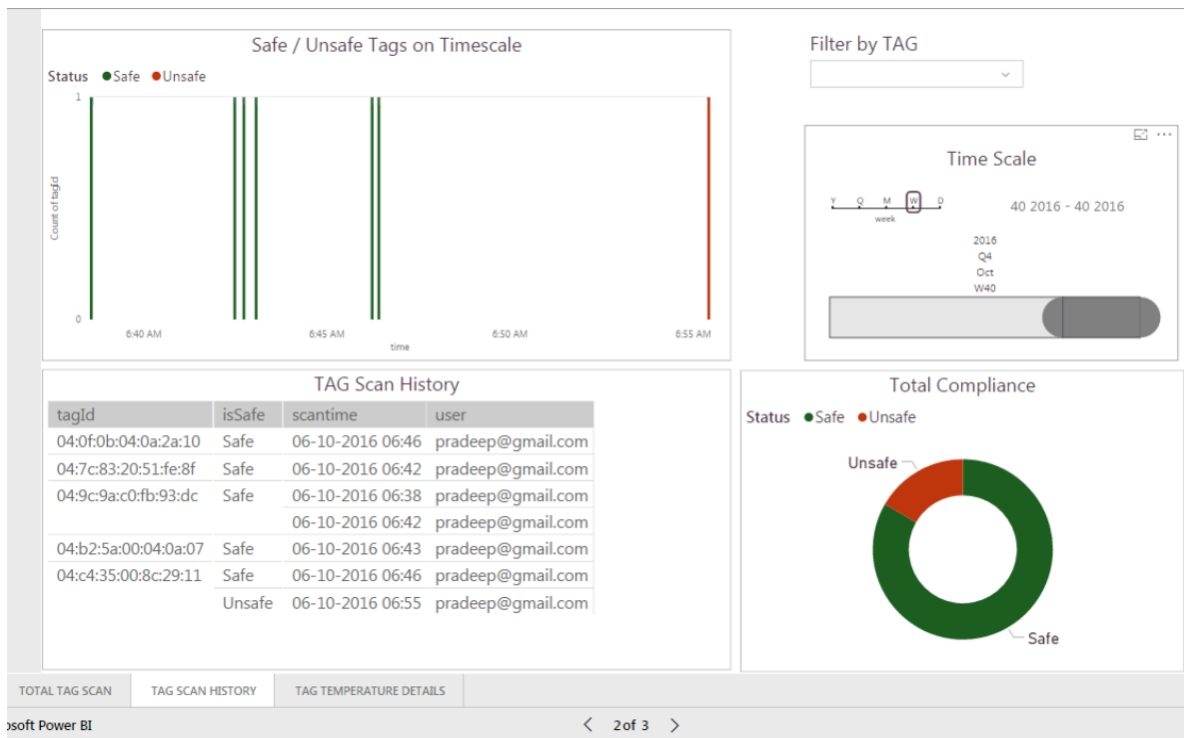
3.1. Total Tag Scan Report

This report shows the geographical locations of the tag scans and scan timeline history. The user can filter data based on “Tag Id”, “State”, “Product”, and “Time Range”.



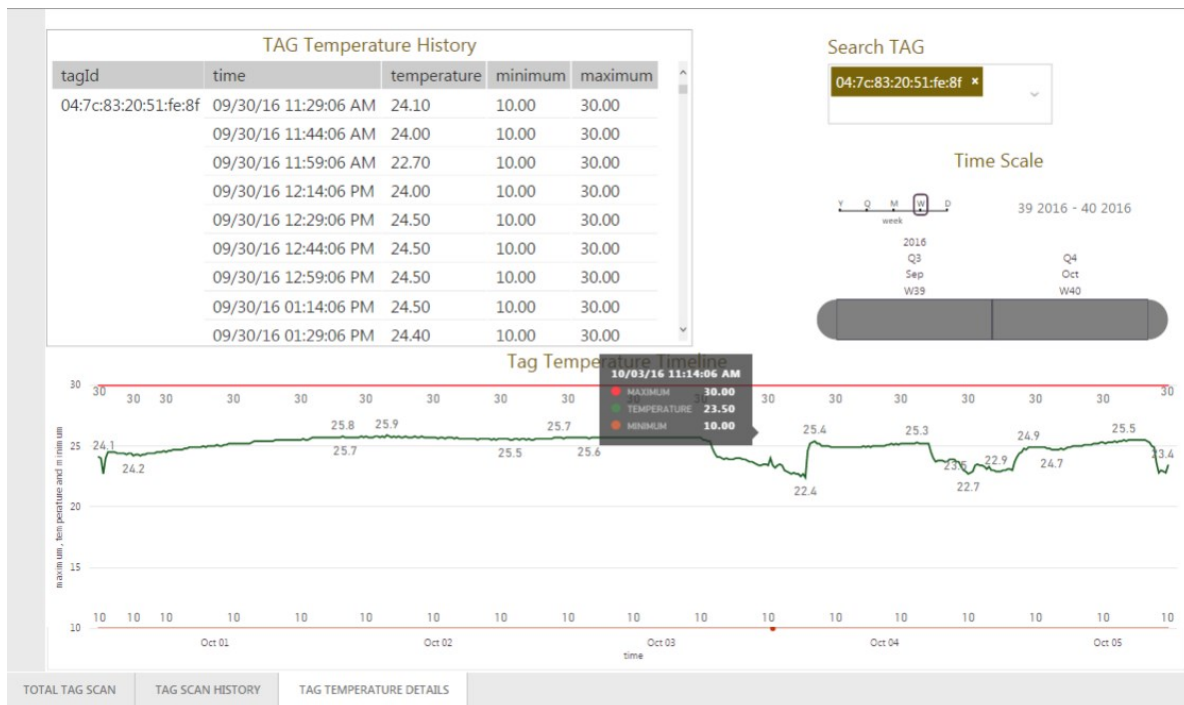
3.2. Tag Scan History

This report shows the distribution of scans across “Safe/Unsafe” categories. The user can filter by “Tag Id” to view the scan history.



3.3. Tag Temperature Details

This report shows the detailed temperature reading graph. The user can filter the temperature readings using the “Time Range” filter.



4. Label Configuration – Web Dashboard

The user can define additional profiles via the “Label Configuration” section in the dashboard. These new profiles will be available to all users using the same group token, indicating that they belong to the same company. These profiles can be assigned to specific users. These users can apply the profiles to their labels via the mobile app.

Label Configuration						Add Configuration Profile	
Profile Name	Expire Date	Min Temperature (°C)	Max Temperature (°C)	Temperature Interval (sec)	Email	Product Name	Status
Configuration Profile 8	24-Sep-2016	2.0	8.0	45	user1@gmail.com	Oxyphenonium	ACTIVE
Configuration Profile 9	25-Feb-2017	2.0	10.0	60	user1@gmail.com	Oxyphenonium	ACTIVE
Configuration Profile 10	17-Dec-2016	10.0	40.0	15	user1@gmail.com	Oxyphenonium	ACTIVE
Configuration Profile 11	18-Nov-2016	10.0	30.0	10	user1@gmail.com	Oxyphenonium	ACTIVE
Configuration Profile 12	19-Oct-2016	2.0	67.0	1	user1@gmail.com	Oxyphenonium	ACTIVE
Configuration Profile 16	22-Dec-2016	10.0	35.0	900	user1@gmail.com	Oxyphenonium	ACTIVE
Duummy	06-Oct-2016	10.0	23.0	0	user1@gmail.com	Oxyphenonium	ACTIVE
New Config Profile	30-Dec-2020	10.0	40.0	15	-	Oxyphenonium	INACTIVE
Configuration Profile13	26-Nov-2016	-40.0	85.0	0	user1@gmail.com	Oxyphenonium	ACTIVE
reset configuration	13-Jan-2017	0.0	0.0	0	user1@gmail.com	Oxyphenonium	ACTIVE